

RoHS

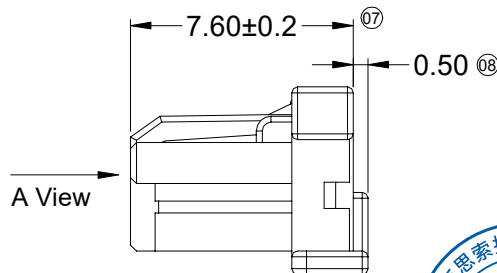
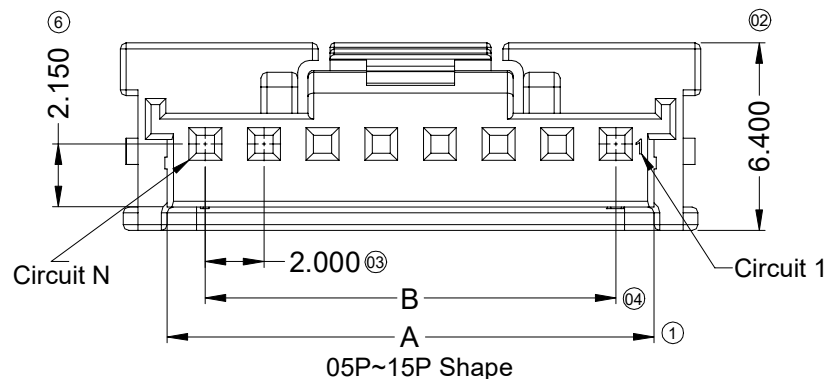
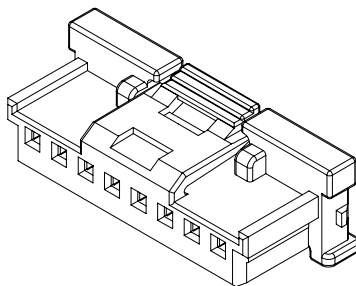
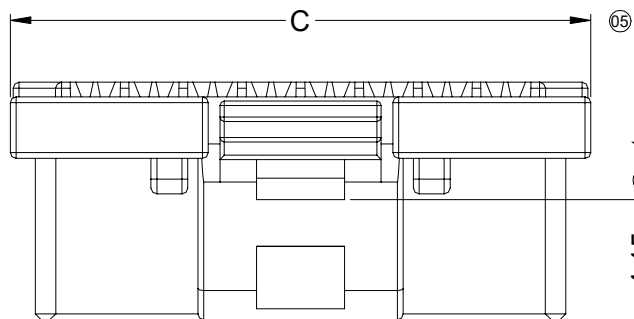
This products can apply to the SESO Doc NO. QA-3-04-005 of Environmental&Material Management Rules

Specifications :

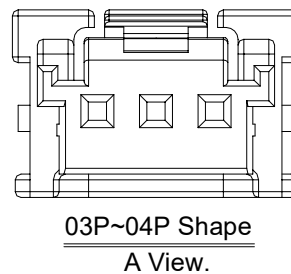
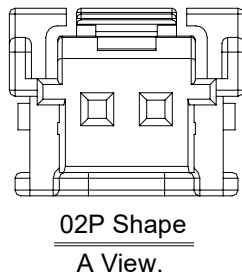
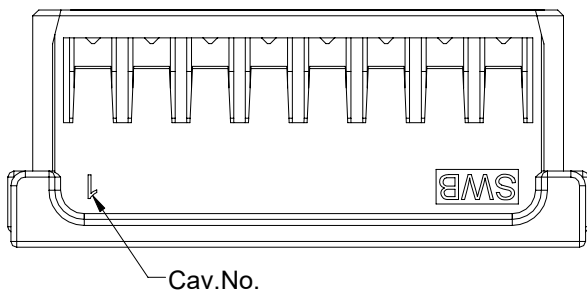
- Voltage rating: 125V AC / DC
- Current rating: 3A AC / DC
- Withstanding voltage: 500V AC/minute
- Temperature range: -40°C~+125°C
- Insulation resistance: ≥ 1000MΩ
- Contact resistance: ≤10mΩ
- After environmental testing: ≤20mΩ
- Suitable SESO Terminal: 2021T
- Suitable SESO TPA: C2021
- Suitable SESO Header: 2008W
- "★" Critical dimension

2021 H - XX - PT XX
 ① ② ③ ④ ⑤

- ① Series No.
- ② Category: H-HOUSING
- ③ Row No.-Pin No.:XX-02~15 Pin
- ④ Plastic material:PT-PBT+GF UL94-V0
- ⑤ Color:BK-Black NC-Natural



Poles	Dimensions (mm)		
	A	B	C
02	4.60	2.00	8.00
03	6.60	4.00	9.80
04	8.60	6.00	11.80
05	10.60	8.00	13.80
06	12.60	10.00	15.80
07	14.60	12.00	17.80
08	16.60	14.00	19.80
09	18.60	16.00	21.80
10	20.60	18.00	23.80
11	22.60	20.00	25.80
12	24.60	22.00	27.80
13	26.60	24.00	29.80
14	28.60	26.00	31.80
15	30.60	28.00	33.80



DATE	REV	ECN NO.	DESCRIPTION	MODIFY	APPROVAL
20220810	A2	/	Plastic new color specification	Wangcheng	Larry Yang

GENERAL TOLERANCE	
.X	±0.30
.XX	±0.20
.XXX	±0.10
X.' ±2'	
PROJECT	

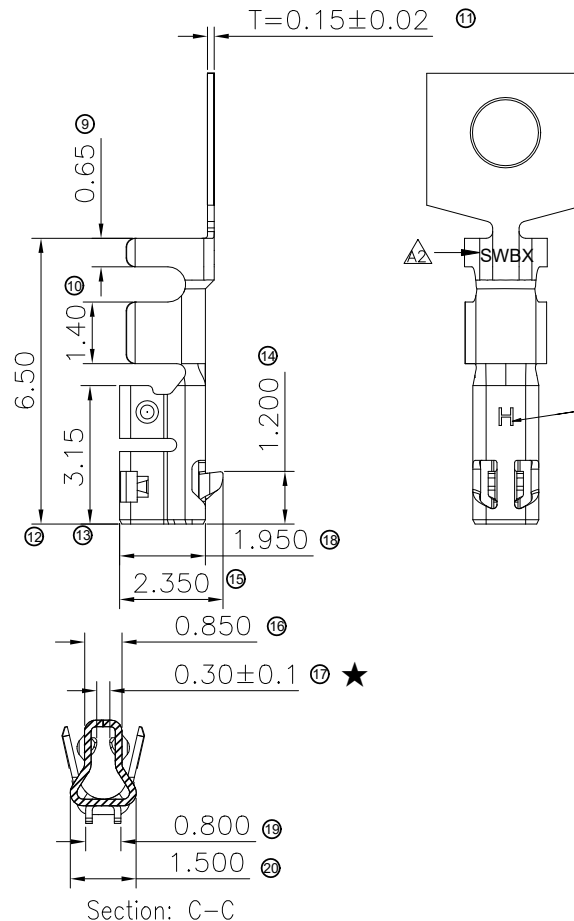
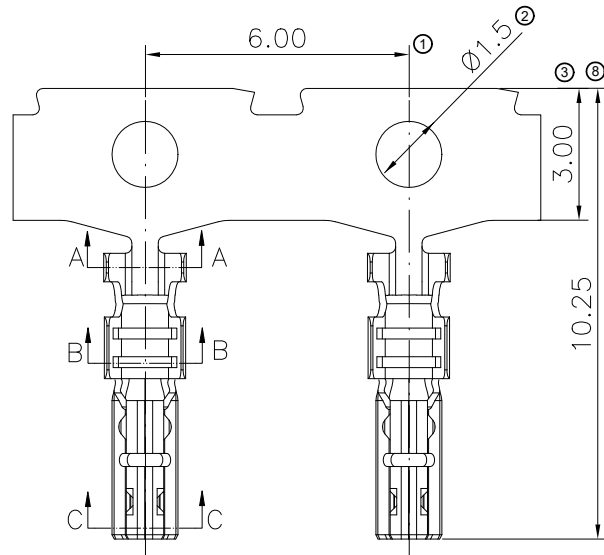
SMS 东莞市思索技术股份有限公司
 Dongguan SESO Technology Co.,Ltd.

APPROVAL	CHECK	DRAWN	DATE
Zhang	Larry Yang	Xiaohu Jiang	2020/08/07

PART NO. 2021H-XX-PTXX				
TITLE 2.00mm Pitch WTB Conn.Housing With TPA Feature				
UNIT	SCALE	SHEET	REV	NUMBER
mm	4:1	1/1	A2	A-000

RoHS

This products can apply to the SESO Doc NO. QA-3-04-005 of Environmental&Material Management Rules



■ Specification:

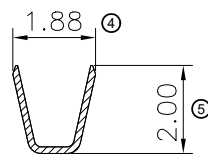
- Voltage Rating: 125V AC / DC
- Current Rating: 3A AC/DC (0.35mm² Wire)
- Temperature Range: -40°C ~ +125°C
- Contact Resistance: $\le 10m\Omega$ (Initial)
$\le 20m\Omega$ (After Testing)
- Mates With SESO Housing: 2021H-XX
- Packaging Drawing: PK-2021TX-HY2B
- Product Specification: PS-2021-01
- Symbols for SPC Dimensions: ★

Material mark
H-High Conductivity Copper

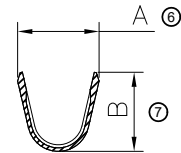


2021 I X - H Y2 B
① ②③ ④ ⑤ ⑥

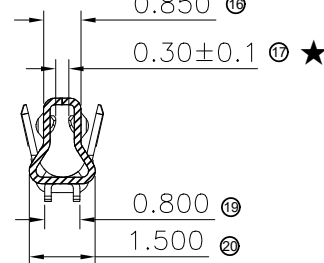
- ① Series No.: 2021
- ② Category: T - Terminal
- ③ Shape: Blank-Low Feet ; H-High Feet
- ④ Material: H-High Conductivity Copper
- ⑤ Plating Code: Y2-40~120u" (1~3um) Tin
- ⑥ Plating Process:
B-Stamping After Plating



Section: A-A



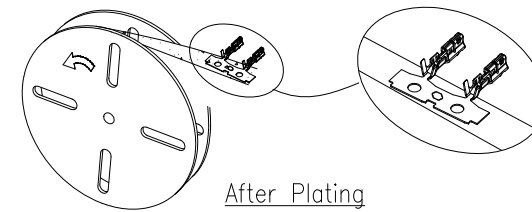
Section: B-B



Section: C-C

Table 1

2021TH-HY2B	AWG#22 (0.35mm ²)	φ1.4mm Max	2021H	1.85	1.80
2021T-HY2B	AWG#24~26 (0.22~0.13mm ²)	φ1.2mm Max		1.25	1.35
P/N	Wire Range	Insulation O.D.	Mates With SWB Housing	Dim A	Dim B



After Plating

				GENERAL TOLERANCE				PART NO.							
				.X ±0.35				2021TX-HY2B							
				.XX ±0.25				TITLE							
				.XXX ±0.15				2.00mm Pitch WTB Conn.Terminal							
				X.' ±2'				APPROVAL		CHECK		DRAWN		DATE	
				PROJECT				Jason Huang		Harvey Yan		Xiaohu Jiang		2020/08/20	
				PROJECT				UNIT		SCALE		SHEET		REV	
				PROJECT				mm		6:1		1/1		A2	
				PROJECT				NUMBER						A-000	
				PROJECT											

SMS 东莞市思索技术股份有限公司
Dongguan SESO Technology Co.,Ltd.

2021/02/23	A2	/	Add SWB LOGO	Xiaohu Jiang	Jinjiang Yang
2020/10/07	A1	/	Add plating code "Y2" and plating process	Xiaohu Jiang	Harvey Yan
DATE	REV	ECN NO.	DESCRIPTION	MODIFY	APPROVAL

RoHS

This products can apply to the SESO Doc NO. QA-3-04-005 of Environmental&Material Management Rules



Specifications :

- Voltage rating: 125V AC / DC
- Current rating: 3A AC / DC
- Withstanding voltage: 500V AC/minute
- Temperature range: -40°C~+125°C
- Insulation resistance: ≥1000MΩ
- Contact resistance: ≤10mΩ
- After environmental testing: ≤20mΩ
- Suitable SESO Terminal: 2021T
- Suitable SESO Housing: 2021H
- Suitable SESO Header: 2008W
- "★" Critical dimension

C2021 - XX - PT NC

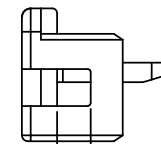
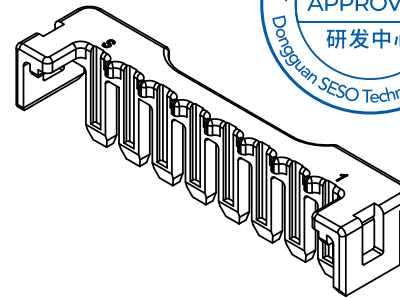
① ② ③ ④

① Series No.

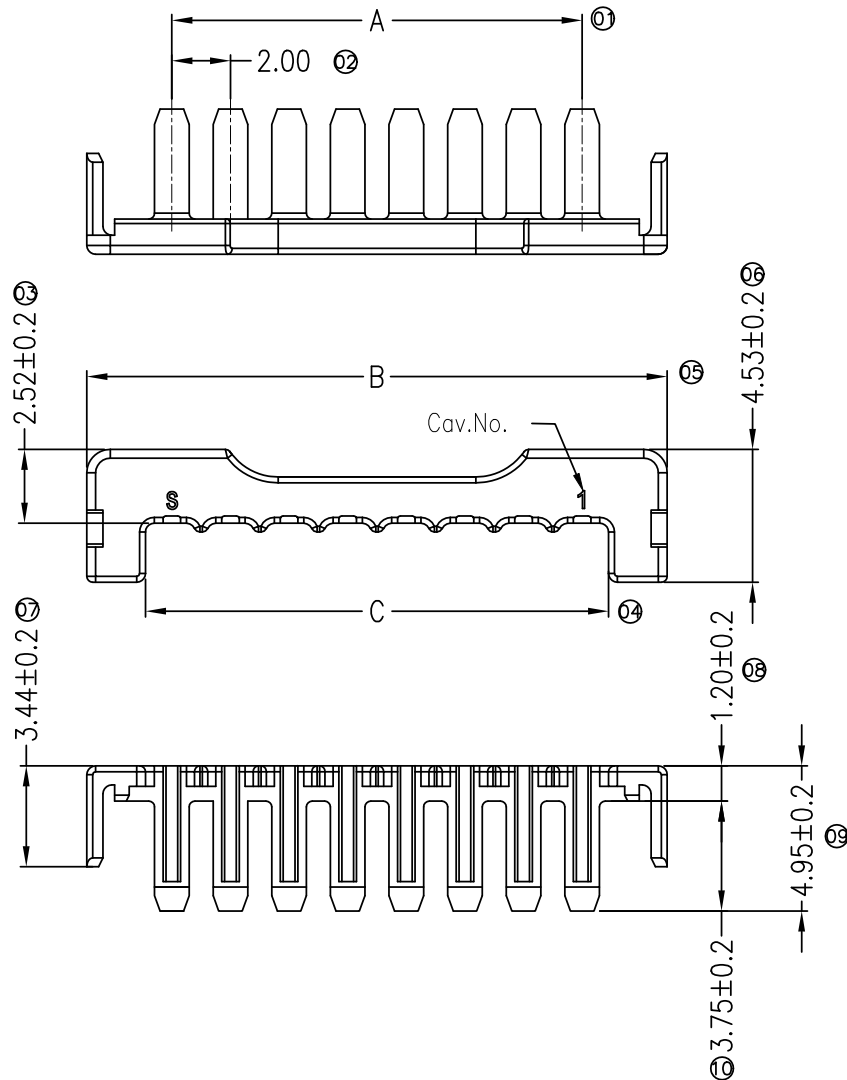
② Row No.-Pin No: XX-02~15Pin

③ Plastic material: PT- PBT+GF UL 94-V0

④ Color: NC-Natural Color



1.150 ① ★



Poles	Dimensions (mm)			Poles	Dimensions (mm)		
	A	B	C		A	B	C
02	2.00	7.80	3.80	09	16.00	21.80	17.80
03	4.00	9.80	5.80	10	18.00	23.80	19.80
04	6.00	11.80	7.80	11	20.00	25.80	21.80
05	8.00	13.80	9.80	12	22.00	27.80	23.80
06	10.00	15.80	11.80	13	24.00	29.80	25.80
07	12.00	17.80	13.80	14	26.00	31.80	27.80
08	14.00	19.80	15.80	15	28.00	33.80	29.80

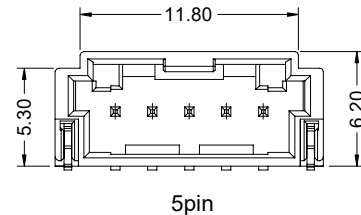
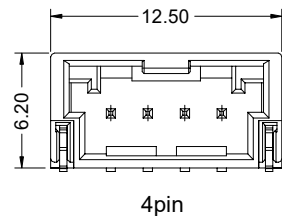
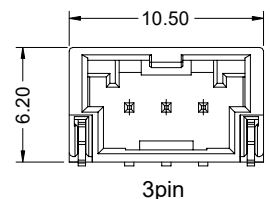
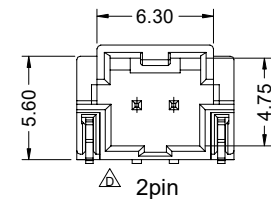
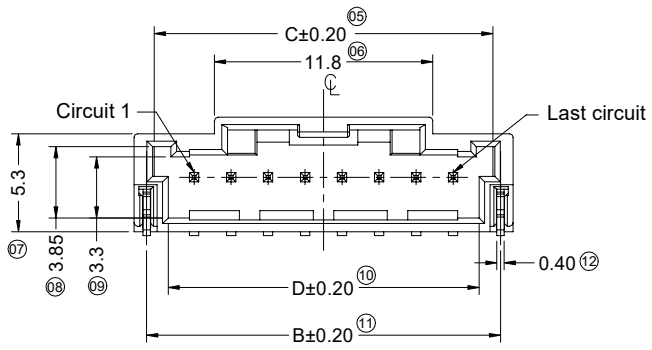
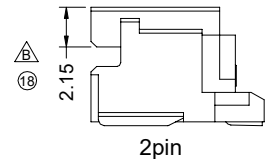
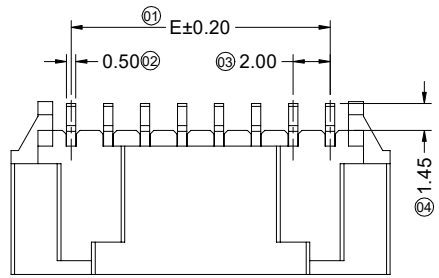
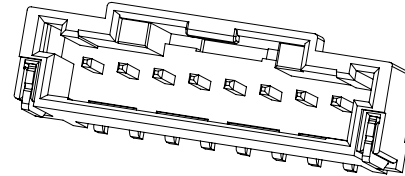
					GENERAL TOLERANCE				PART NO. C2021-XX-PTNC					
					.X ±0.30				TITLE 2.00mm Pitch WTB Conn. TPA					
					.XX ±0.20									
					.XXX±0.10				APPROVAL CHECK DRAWN DATE					
					X.' ±2'				UNIT SCALE SHEET REV NUMBER					
DATE	REV	ECN NO.	DESCRIPTION	MODIFY	APPROVAL	PROJECT	Jason Huang	Larry Yang	Xiaohu Jiang	2019/11/09	mm 4:1 1/1 A1 A-000			

SMS 东莞市思索技术股份有限公司
Dongguan SESO Technology Co.,Ltd.

RoHS

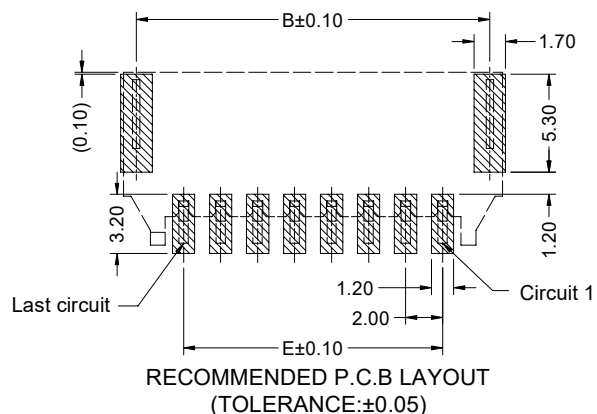
This products can apply to the SESO Doc NO. QA-3-04-005 of Environmental&Material Management Rules

- Specifications :
- Voltage rating: 125V AC / DC
 - Current rating: 3A AC / DC
 - Withstanding voltage: 500V AC/minute
 - Temperature range: -40°C~+125°C
 - Insulation resistance: ≥1000MΩ
 - Contact resistance: ≤10mΩ
 - After environmental testing: ≤20mΩ
 - Material(Pin): Brass
 - Mates With SESO Housing: 2008H
 - "★" Critical dimension



2008 W R S - 1 x XX - XX X B 05 R R XXX Q
① ② ③ ④ ⑤ ⑥ ⑦ ⑧ ⑨ ⑩ ⑪ ⑫ ⑬

- ① Series No.
- ② Category: W-wafer
- ③ Connector Type: R-Right Angle 90°
- ④ Mounting Type: S-SMT
- ⑤ Row No.-Pin No Per Row: 1xXX-Single Row 1xXXPin
- ⑥ Plastic material: 9T- PA9T UL94V-0; LP- LCP UL94V-0
- ⑦ Color: N-Natural; B-Black; R-Red; L-Blue
- ⑧ Metal material: B-Brass
- ⑨ Plating Code: 05-Matte Tin 30-Contact Gold Flash
- ⑩ Packing: R-Reel
- ⑪ RoHS/HF: H-Halogen-Free R-Rohs
- ⑫ Sequence Number: 002-Coldsealing ; 02C-Heatsealing
- ⑬ Special code: Q-Automotive Connectors



Poles	Dimensions (mm)				
	A	B	C	D	E
02	8.50	7.13	6.30	4.80	2.00
03	10.50	9.13	8.30	6.80	4.00
04	12.50	11.13	10.30	8.80	6.00
05	14.50	13.13	12.30	10.80	8.00
06	16.50	15.13	14.30	12.80	10.00
07	18.50	17.13	16.30	14.80	12.00
08	20.50	19.13	18.30	16.80	14.00
09	22.50	21.13	20.30	18.80	16.00
10	24.50	23.13	22.30	20.80	18.00
11	26.50	25.13	24.30	22.80	20.00
12	28.50	27.13	26.30	24.80	22.00
13	30.50	29.13	28.30	26.80	24.00
14	32.50	31.13	30.30	28.80	26.00
15	34.50	33.13	32.30	30.80	28.00

DATE	REV	ECN NO.	DESCRIPTION	MODIFY	APPROVAL
2022/10/06	E1		Added contact area gold plated G/F specification	Xue	Larry
2021/12/16	E	EN20211216001	Modify the first pin label	Xue	Larry

GENERAL TOLERANCE	
.X	±0.30
.XX	±0.20
.XXX	±0.10
X.' ±2'	
PROJECT	

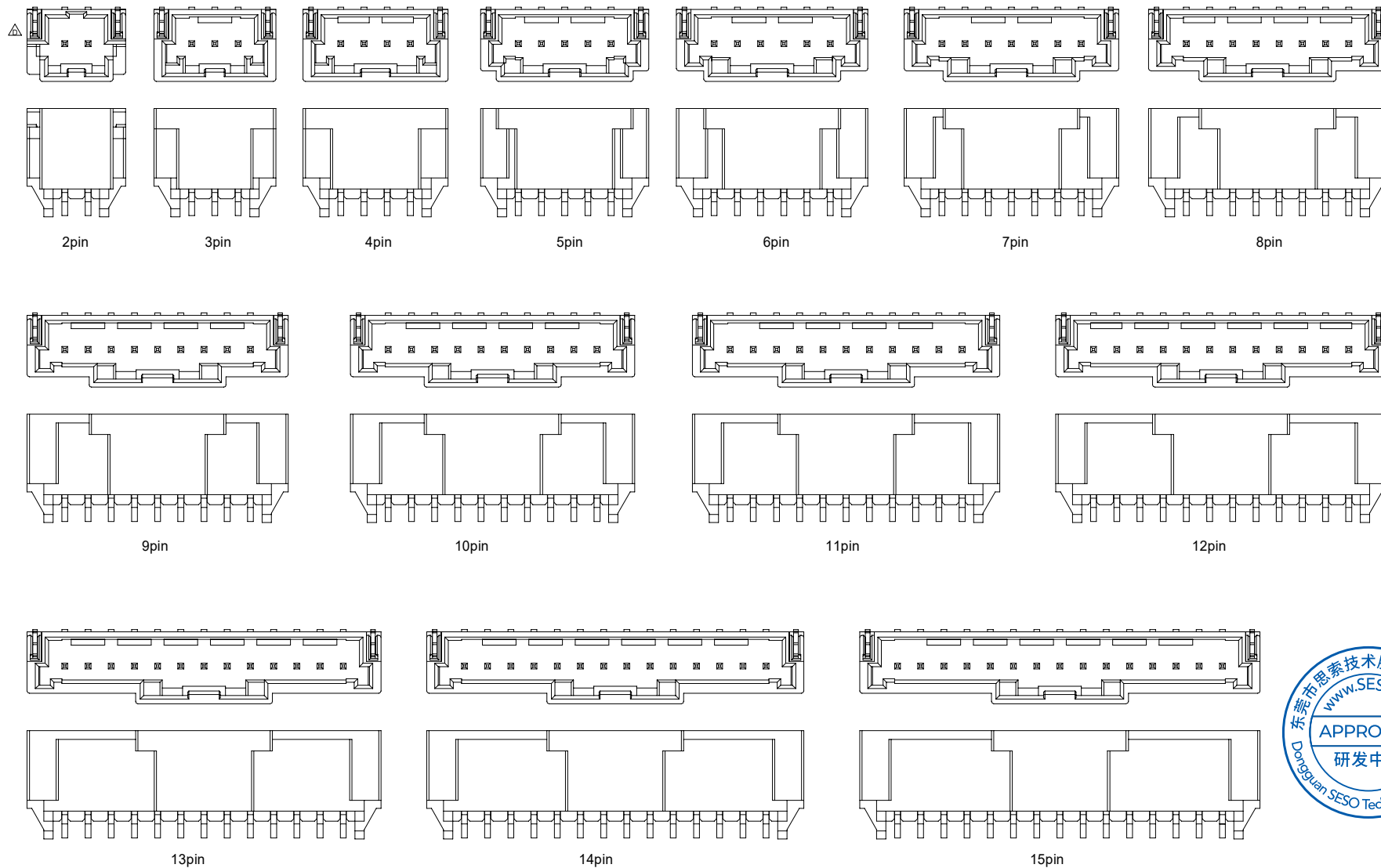
SMS 东莞市思索技术股份有限公司
Dongguan SESO Technology Co.,Ltd.

APPROVAL	CHECK	DRAWN	DATE
Jack Zhang	Larry Yang	Alan qin	2018/10/16

PART NO.				
2008WRS-1xXX-XXXB05RRXXXQ				
TITLE				
Pitch 2.00 mm 90° SMT Wafer Connectors				
UNIT	SCALE	SHEET	REV	NUMBER
mm	1:1	1/2	E1	CD

RoHS

This products can apply to the SESO Doc NO. QA-3-04-005 of Environmental&Material Management Rules



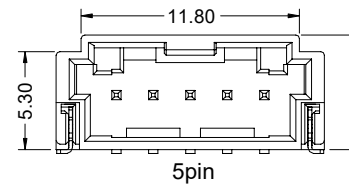
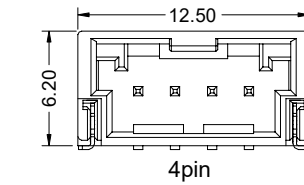
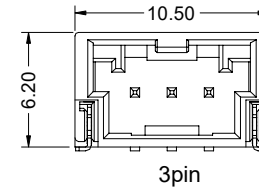
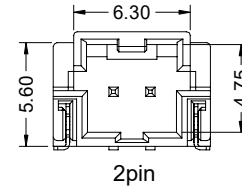
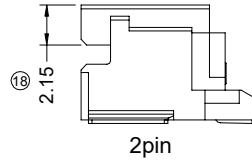
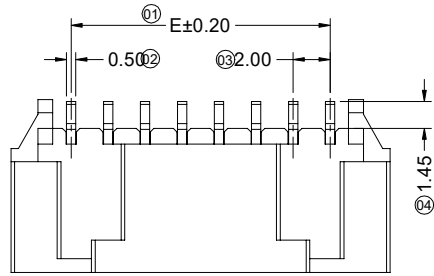
						GENERAL TOLERANCE .X ±0.30 .XX ±0.20 .XXX±0.10 X.' ±2' PROJECT 				SMS 东莞市思索技术股份有限公司 Dongguan SESO Technology Co.,Ltd.				PART NO. 2008WRS-1xXX-XXXB05RRXXXQ				
2022/10/06	E1		Added contact area gold plated G/F specification	Xue	Larry	APPROVAL	CHECK	DRAWN	DATE	TITLE Pitch 2.00 mm 90° SMT Wafer Connectors								
2021/12/16	E	EN20211216001	Modify the first pin label	Xue	Larry					Robing	Joshua	Alan qin	2018/10/16	UNIT	SCALE	SHEET	REV	NUMBER
DATE	REV	ECN NO.	DESCRIPTION	MODIFY	APPROVAL					mm	1:1	2/2	E1	CD				

RoHS

This products can apply to the SESO Doc NO. QA-3-04-005 of Environmental&Material Management Rules

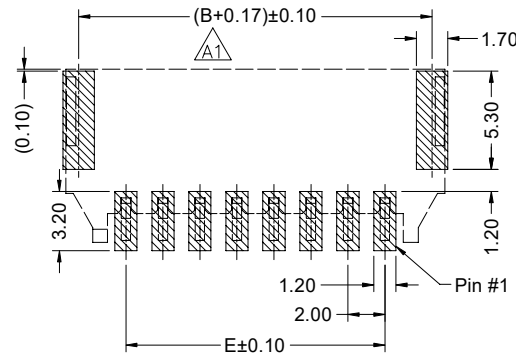
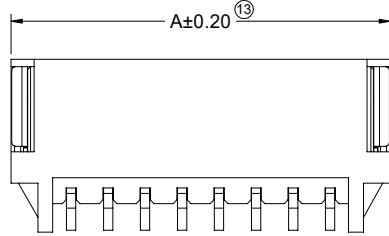
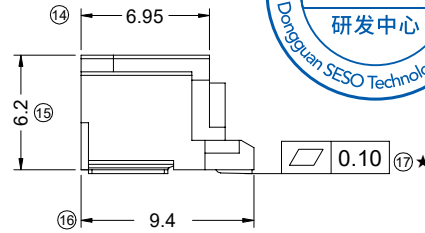
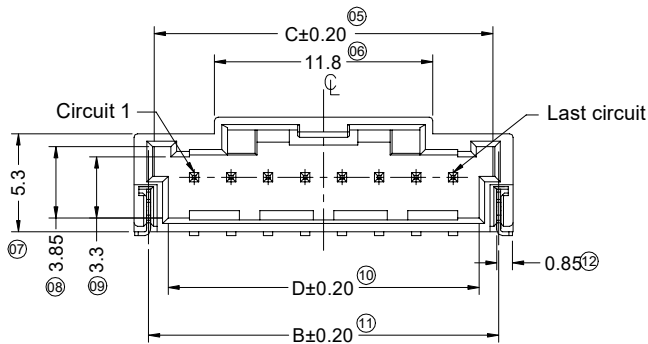
Specifications :

- Voltage rating: 125V AC / DC
- Current rating: 3A AC / DC
- Withstanding voltage: 500V AC/minute
- Temperature range: -40°C~+125°C
- Insulation resistance: >1000MΩ
- Contact resistance: <10mΩ
- After environmental testing: <20mΩ
- Material(Pin): Brass
- Mates With SESO Housing: 2008H
- "★" Critical dimension



2008 W R S - XX - XX XXX X XX
 ① ② ③ ④ ⑤ ⑥ ⑦ ⑧ ⑨

- ① Series No.
- ② Category: W-wafer
- ③ Connector Type: R-Right Angle 90°
- ④ Mounting Type: S-SMT
- ⑤ Row No.-Pin No Per Row: XX-Single Row XXPin
- ⑥ Plastic material: 9T- PA9T UL94V-0; LP- LCP UL94V-0
- ⑦ Plating Code: SW1-Matte Tin GW01-Contact Gold Flash
- ⑧ Color: N-Natural; B-Black; R-Red; L-Blue
- ⑨ Packing: R- Reel(Heatsealing) R1- Reel(Coldsealing)



RECOMMENDED P.C.B LAYOUT (TOLERANCE:±0.05)

Poles	Dimensions (mm)				
	A	B	C	D	E
02	8.50	6.93	6.30	4.80	2.00
03	10.50	8.93	8.30	6.80	4.00
04	12.50	10.93	10.30	8.80	6.00
05	14.50	12.93	12.30	10.80	8.00
06	16.50	14.93	14.30	12.80	10.00
07	18.50	16.93	16.30	14.80	12.00
08	20.50	18.93	18.30	16.80	14.00
09	22.50	20.93	20.30	18.80	16.00
10	24.50	22.93	22.30	20.80	18.00
11	26.50	24.93	24.30	22.80	20.00
12	28.50	26.93	26.30	24.80	22.00
13	30.50	28.93	28.30	26.80	24.00
14	32.50	30.93	30.30	28.80	26.00
15	34.50	32.93	32.30	30.80	28.00
16	36.50	34.93	34.30	32.80	30.00

DATE	REV	ECN NO.	DESCRIPTION	MODIFY	APPROVAL
2023.12.16	A2	/	Added 16Pin	Jason Zhou	Larry Yang
2023.11.30	A1	EN20231130003	Changed the dimensions of the layout positioning pad	Jason Zhou	Larry Yang

GENERAL TOLERANCE	
.X	±0.30
.XX	±0.20
.XXX	±0.10
X.°	±2°
PROJECT	

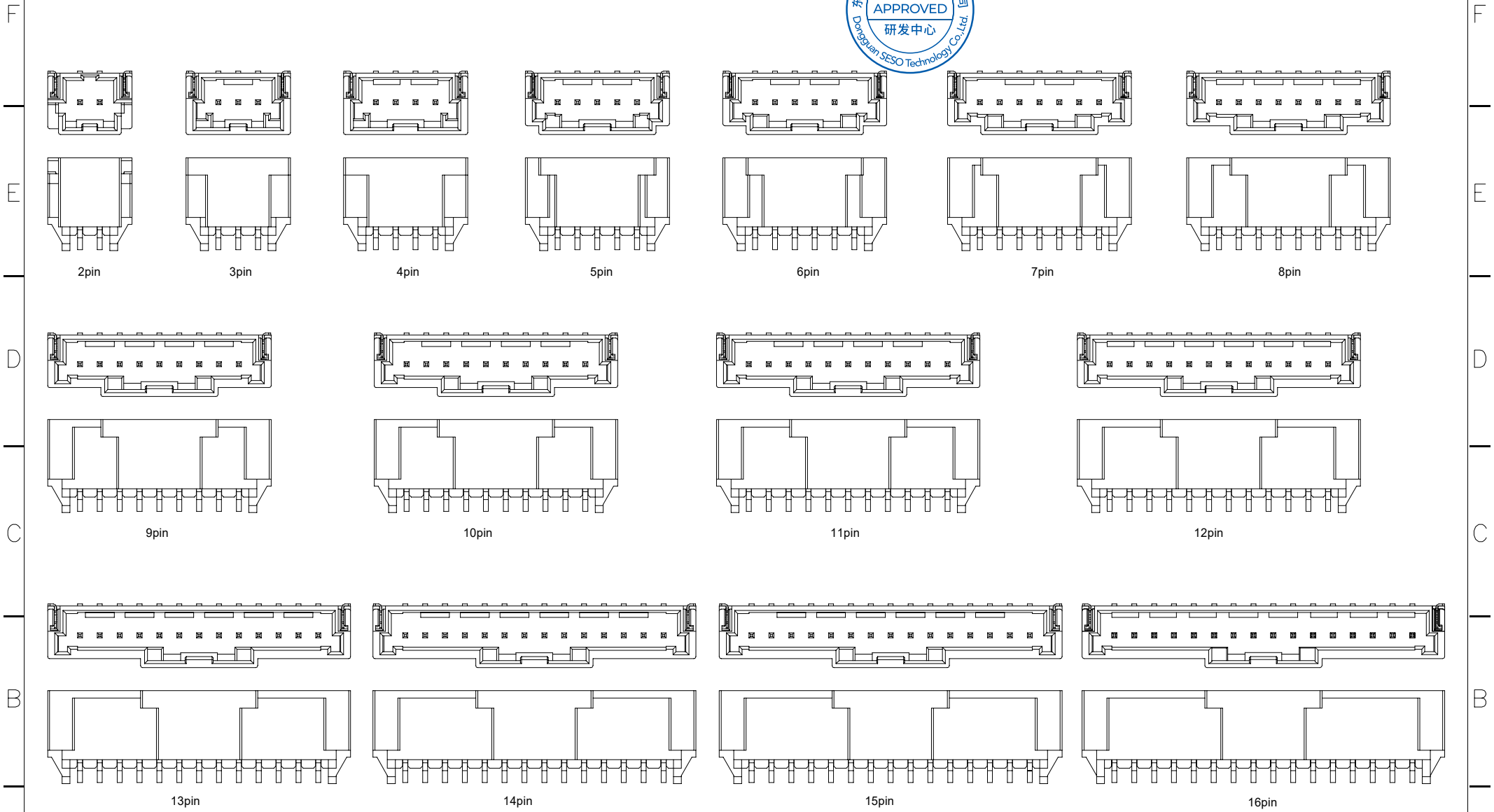
SMS 东莞市思索技术股份有限公司
 Dongguan SESO Technology Co.,Ltd.

APPROVAL	CHECK	DRAWN	DATE
Jack Zhang	Larry Yang	Xue	2022.10.14

PART NO.				
2008WRS-XX-XXXXXXXX				
TITLE				
Pitch 2.00 mm 90° SMT Wafer Connectors				
UNIT	SCALE	SHEET	REV	NUMBER
mm	1:1	1/2	A2	CD

RoHS

This products can apply to the SESO Doc NO. QA-3-04-005 of Environmental&Material Management Rules



A	2023.12.16	A2	/	Added 16Pin		Joestar Zhou	Larry Yang	东莞市思索技术股份有限公司 Dongguan SESO Technology Co.,Ltd.				PART NO. 2008WRS-XX-XXXXXXX				
	2023.11.30	A1	EN20231130003	Changed the dimensions of the layout positioning pad		Jason Zhou	Larry Yang					TITLE Pitch 2.00 mm 90° SMT Wafer Connectors				
	DATE	REV	ECN NO.	DESCRIPTION	MODIFY	APPROVAL	PROJECT	APPROVAL	CHECK	DRAWN	DATE	UNIT	SCALE	SHEET	REV	NUMBER
								Jack Zhang	Larry Yang	Xue	2022.10.14	mm	1:1	2/2	A2	CD

RoHS

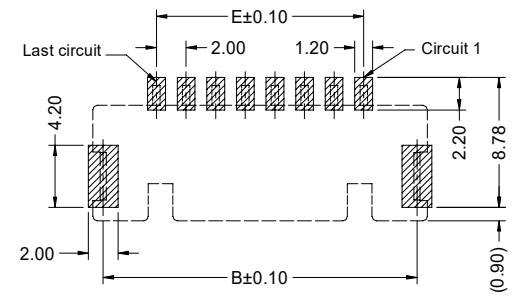
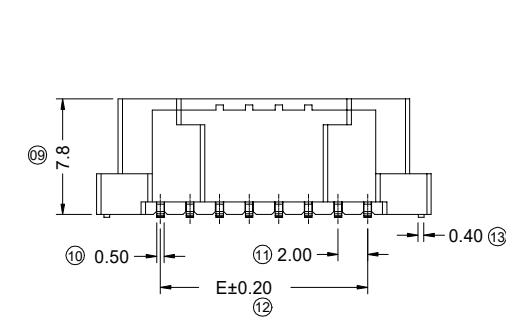
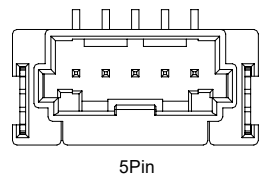
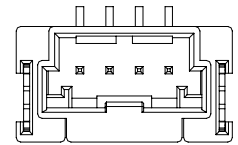
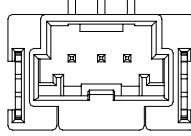
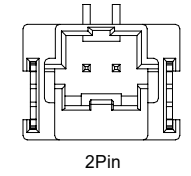
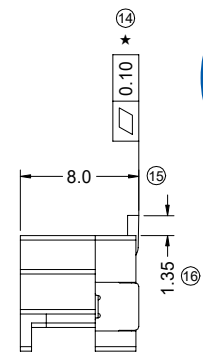
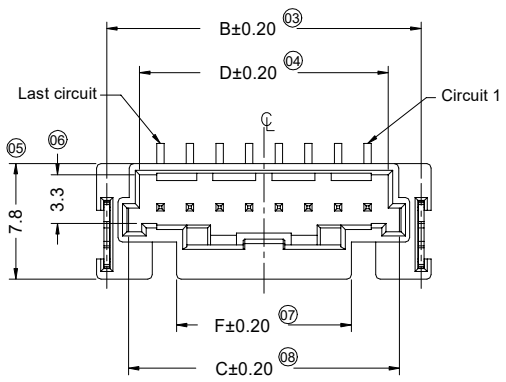
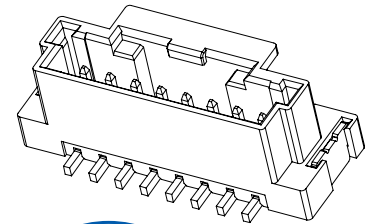
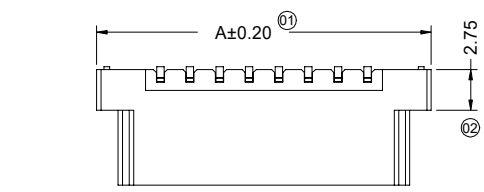
This products can apply to the SESO Doc NO. QA-3-04-005 of Environmental&Material Management Rules

- Specifications :
- Voltage rating: 125V AC / DC
 - Current rating: 3A AC / DC
 - Withstanding voltage: 500V AC/minute
 - Temperature range: -40°C~+125°C
 - Insulation resistance: ≥1000MΩ
 - Contact resistance: ≤10mΩ
 - After environmental testing: ≤20mΩ
 - Material(Pin): Brass
 - Mates With SESO Housing: 2008H
 - "★" Critical dimension



2008 W V S - 1 x XX - XX X B XX X R XXX Q
 ① ② ③ ④ ⑤ ⑥ ⑦ ⑧ ⑨ ⑩ ⑪ ⑫ ⑬

- ① Series No.
- ② Category: W-wafer
- ③ Connector Type: V-Straight 180°
- ④ Mounting Type: S-SMT
- ⑤ Row No.-Pin No: 1xXX-Single Row 1xXXPin
- ⑥ Plastic material: 9T- PA9T 94V-0; LP- LCP 94V-0
- ⑦ Color: N-Natural; B-Black; R-Red; L-Blue
- ⑧ Metal material: B-Brass
- ⑨ Plating Code: 05-Matte Tin
30-Contact Area: Gold flash
Solder Area: Matte Tin
- ⑩ Packing: R-Reel, Without Mylar
- ⑪ RoHS/HF: R-RoHS H-Halogen-Free
- ⑫ Sequence Number: 002-Coldsealing ; 02C-Heatsealing
- ⑬ Special code :Q-Automotive Connectors



RECOMMENDED P.C.B LAYOUT (TOLERANCE:±0.05)

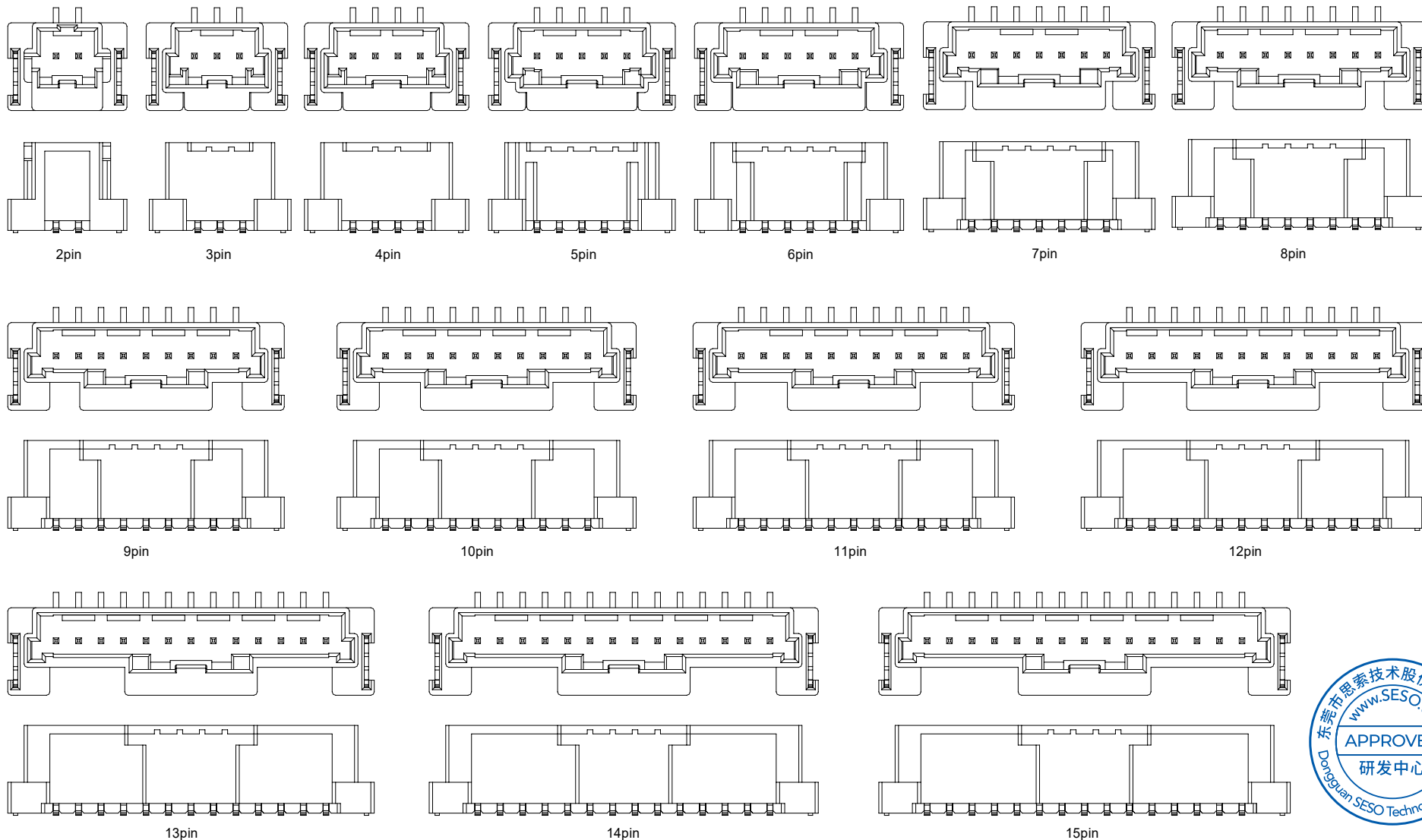
Poles	Dimensions (mm)					
	A	B	C	D	E	F
02	10.60	9.23	6.30	4.80	2.00	6.30
03	12.60	11.23	8.30	6.80	4.00	5.80
04	14.60	13.23	10.30	8.80	6.00	7.80
05	16.60	15.23	12.30	10.80	8.00	9.80
06	18.60	17.23	14.30	12.80	10.00	11.80
07	20.60	19.23	16.30	14.80	12.00	11.80
08	22.60	21.23	18.30	16.80	14.00	11.80
09	24.60	23.23	20.30	18.80	16.00	11.80
10	26.60	25.23	22.30	20.80	18.00	11.80
11	28.60	27.23	24.30	22.80	20.00	11.80
12	30.60	29.23	26.30	24.80	22.00	11.80
13	32.60	31.23	28.30	26.80	24.00	11.80
14	34.60	33.23	30.30	28.80	26.00	11.80
15	36.60	35.23	32.30	30.80	28.00	11.80

DATE	REV	ECN NO.	DESCRIPTION	MODIFY	APPROVAL	APPROVAL				PROJECT	PART NO.			
2021/12/16	D	EN20211216001	Modify the first pin label	Xue	Robing	APPROVAL	CHECK	DRAWN	DATE	2008WVS-1xXX-XXXBXXRRXXXQ	TITLE			
2020/03/16	C	ER20190805001	Update Drawing Frame, The Same ECR And ECN No	Alan qin	Robing	Jack Zhang	Larry Yang	Alan qin	2019/01/16	Pitch 2.00 mm 180° SMT Wafer Connectors				
										UNIT	SCALE	SHEET	REV	NUMBER
										mm	1:1	1/2	D	CD

SMS 东莞市思索技术股份有限公司
Dongguan SESO Technology Co.,Ltd.

RoHS

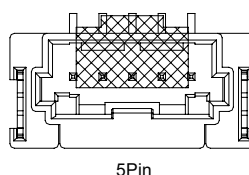
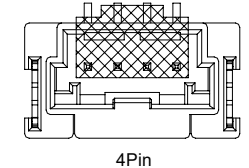
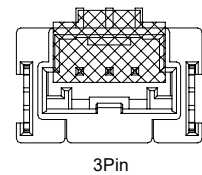
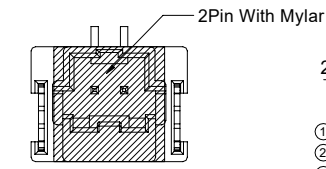
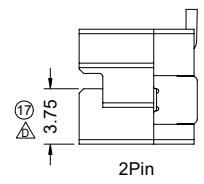
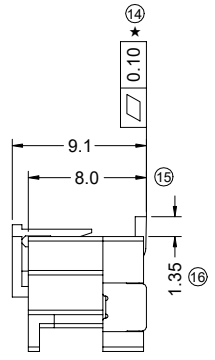
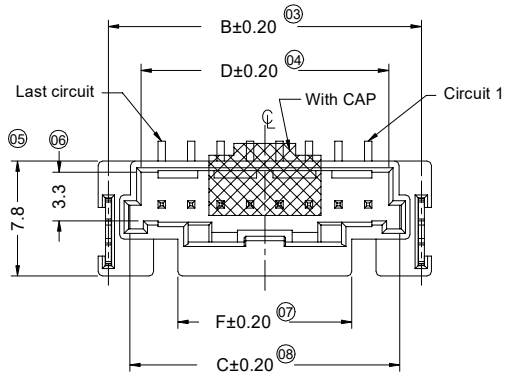
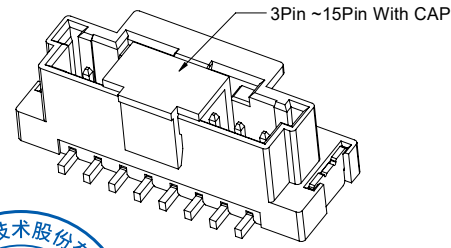
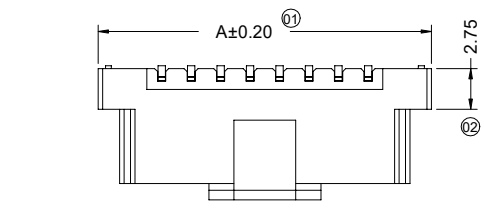
This products can apply to the SESO Doc NO. QA-3-04-005 of Environmental&Material Management Rules



					GENERAL TOLERANCE .X ±0.30 .XX ±0.20 .XXX±0.10 X.' ±2' PROJECT 				SMS 东莞市思索技术股份有限公司 Dongguan SESO Technology Co.,Ltd.				PART NO. 2008WVS-1xXX-XXXBXXRRXXQ				
					APPROVAL CHECK DRAWN DATE Jack Zhang Larry Yang Alan qin 2019/01/16								TITLE Pitch 2.00 mm 180° SMT Wafer Connectors				
2021/12/16	D	EN20211216001	Modify the first pin label	Xue	Robing						UNIT	SCALE	SHEET	REV	NUMBER		
2020/03/16	C	ER20190805001	Update Drawing Frame, The Same ECR And ECN No	Alan qin	Robing						mm	1:1	2/2	D	CD		
DATE	REV	ECN NO.	DESCRIPTION	MODIFY	APPROVAL												

RoHS

This products can apply to the SESO Doc NO. QA-3-04-005 of Environmental&Material Management Rules

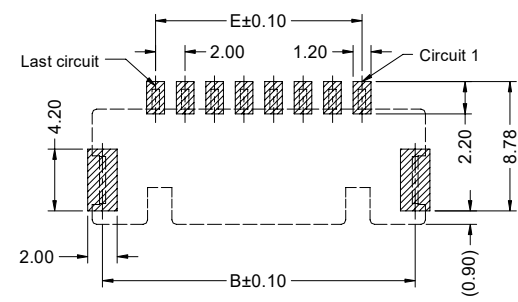


- Specifications :
- Voltage rating: 125V AC / DC
 - Current rating: 3A AC / DC
 - Withstanding voltage: 500V AC/minute
 - Temperature range: -40°C~+125°C
 - Insulation resistance: ≥1000MΩ
 - Contact resistance: ≤10mΩ
 - After environmental testing: ≤20mΩ
 - Material(Pin): Brass
 - Mates With SESO Housing: 2008H
 - "*" Critical dimension

2008 W V S - 1 x XX - XX X B 05 X R XXX Q
 ① ② ③ ④ ⑤ ⑥ ⑦ ⑧ ⑨ ⑩ ⑪ ⑫ ⑬

- ① Series No.
- ② Category: W-wafer
- ③ Connector Type: V-Straight 180°
- ④ Mouting Type: S-SMT
- ⑤ Row No.-Pin No Per Row: 1xXX-Single Row 1xXXPin
- ⑥ Plastic material: 9T- PA9T 94V-0; LP- LCP 94V-0
- ⑦ Color: N-Natural; B-Black; R-Red; L-Blue
- ⑧ Metal material: B-Brass
- ⑨ Plating Code: 05-Matte Tin
- ⑩ Packing: W-Reel ,With Mylar
C-Reel , With CAP
- ⑪ RoHS/HF: R-RoHS H-Halogen-Free
- ⑫ Sequence Number: 002-Coldsealing ; 02C-Heatsealing
- ⑬ Special code :Q-Automotive Connectors

Poles	Dimensions (mm)					
	A	B	C	D	E	F
02	10.60	9.23	6.30	4.80	2.00	6.30
03	12.60	11.23	8.30	6.80	4.00	5.80
04	14.60	13.23	10.30	8.80	6.00	7.80
05	16.60	15.23	12.30	10.80	8.00	9.80
06	18.60	17.23	14.30	12.80	10.00	11.80
07	20.60	19.23	16.30	14.80	12.00	11.80
08	22.60	21.23	18.30	16.80	14.00	11.80
09	24.60	23.23	20.30	18.80	16.00	11.80
10	26.60	25.23	22.30	20.80	18.00	11.80
11	28.60	27.23	24.30	22.80	20.00	11.80
12	30.60	29.23	26.30	24.80	22.00	11.80
13	32.60	31.23	28.30	26.80	24.00	11.80
14	34.60	33.23	30.30	28.80	26.00	11.80
15	36.60	35.23	32.30	30.80	28.00	11.80



RECOMMENDED P.C.B LAYOUT (TOLERANCE:±0.05)

DATE	REV	ECN NO.	DESCRIPTION	MODIFY	APPROVAL
2021/12/16	F	EN20211216001	Modify the first pin label	Xue	Robing
2020/03/16	E	ER20190805001	Update Drawing Frame, The Same ECR And ECN No	Alan qin	Robing

GENERAL TOLERANCE	
.X	±0.30
.XX	±0.20
.XXX	±0.10
X.*	±2°
PROJECT	

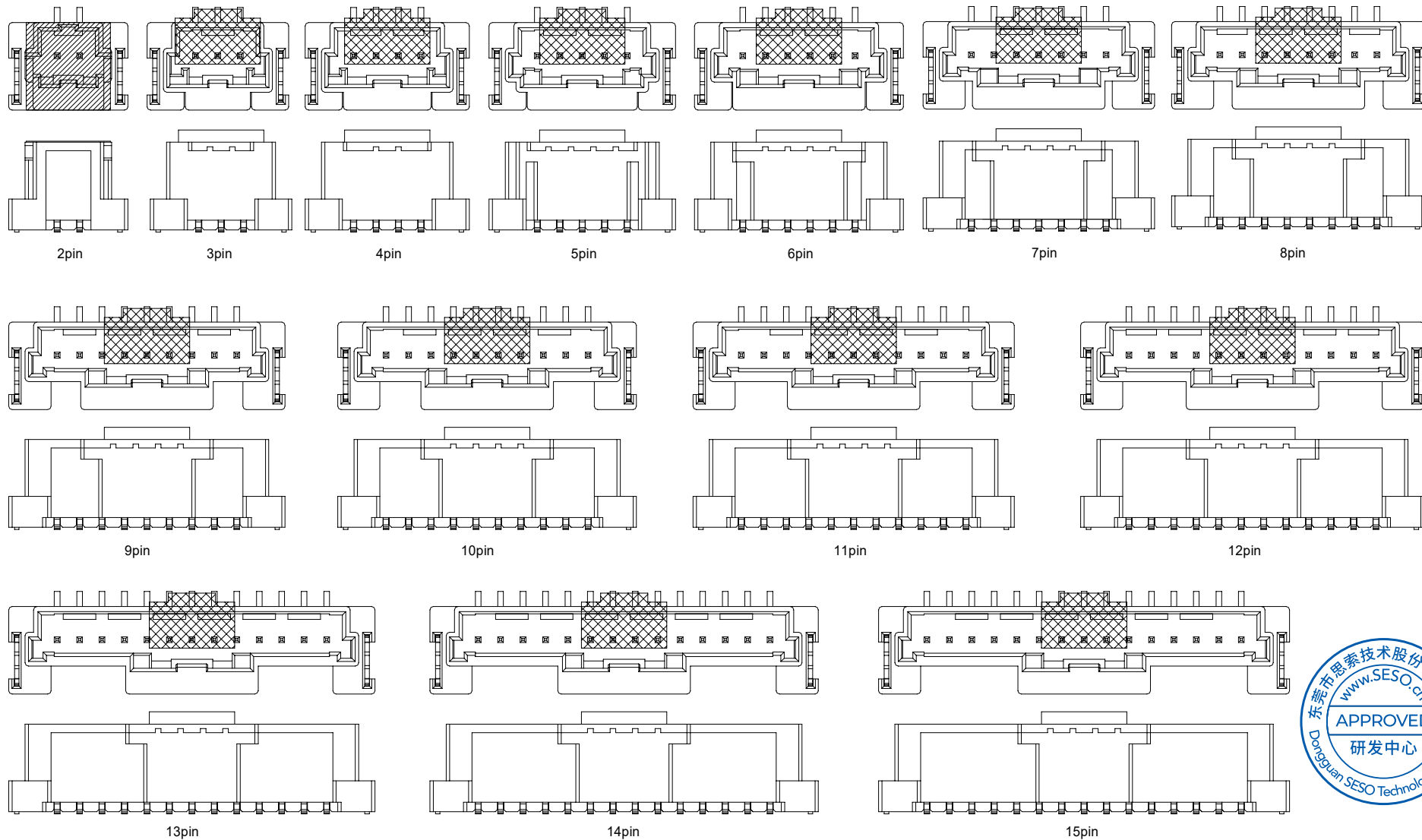
SMS 东莞市思索技术股份有限公司
Dongguan SESO Technology Co.,Ltd.

APPROVAL	CHECK	DRAWN	DATE
Robing	Joshua	Alan qin	2019/01/16

PART NO.				
2008WVS-1xXX-XXXB05X0XXQ				
TITLE				
Pitch 2.00 mm 180° SMT Wafer Connectors				
UNIT	SCALE	SHEET	REV	NUMBER
mm	1:1	1/2	F	A-000

RoHS

This products can apply to the SESO Doc NO. QA-3-04-005 of Environmental&Material Management Rules



DATE	REV	ECN NO.	DESCRIPTION	MODIFY	APPROVAL
2021/12/16	F	EN20211216001	Modify the first pin label	Xue	Robing
2020/03/16	E	ER20190805001	Update Drawing Frame, The Same ECR And ECN No	Alan qin	Robing

SMS 东莞市思索技术股份有限公司
Dongguan SESO Technology Co.,Ltd.

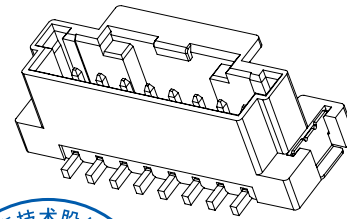
APPROVAL: Robing
CHECK: Joshua
DRAWN: Alan qin
DATE: 2019/01/16

PART NO. 2008WVS-1xXX-XXX05XX0XXQ				
TITLE Pitch 2.00 mm 180° SMT Wafer Connectors				
UNIT	SCALE	SHEET	REV	NUMBER
mm	1:1	2/2	F	A-000

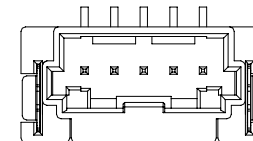
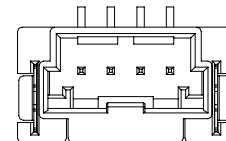
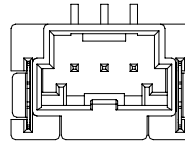
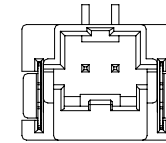
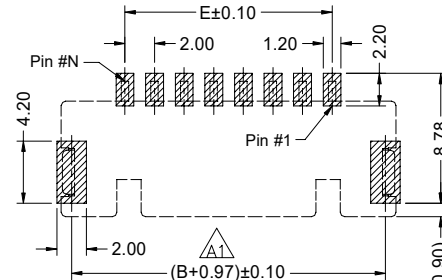
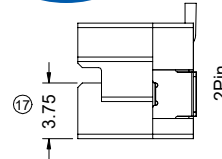
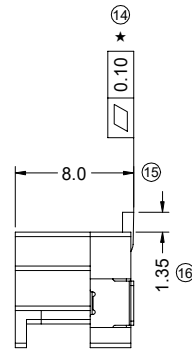
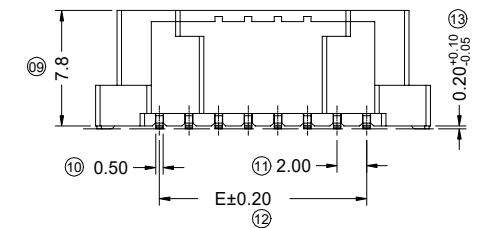
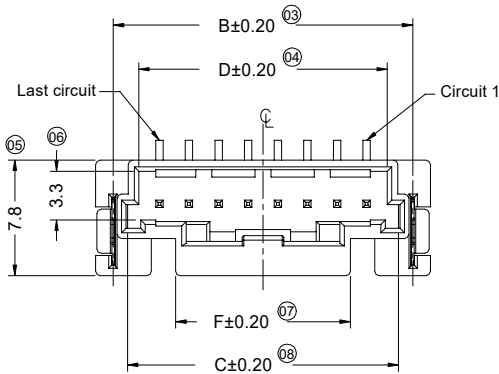
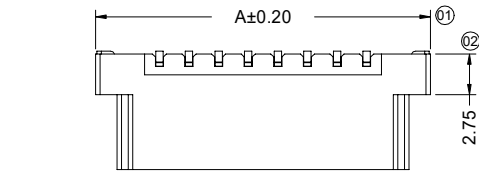
GENERAL TOLERANCE	
.X	±0.30
.XX	±0.20
.XXX	±0.10
X.' ±2'	
PROJECT	

RoHS

This products can apply to the SESO Doc NO. QA-3-04-005 of Environmental&Material Management Rules



- Specifications :
- Voltage rating: 125V AC / DC
 - Current rating: 3A AC / DC
 - Withstanding voltage: 500V AC/minute
 - Temperature range: -40°C~+125°C
 - Insulation resistance:>1000MΩ
 - Contact resistance: <10mΩ
 - After environmental testing: <20mΩ
 - Material(Pin): Brass
 - Mates With SESO Housing: 2008H
 - " * " Critical dimension



2008 W V S - XX - XX XXX X XX
① ② ③ ④ ⑤ ⑥ ⑦ ⑧ ⑨

- ① Series No.
- ② Category: W-wafer
- ③ Connector Type: V-Straight 180°
- ④ Mounting Type: S-SMT
- ⑤ Row No.-Pin No: XX-Single Row XXPin
- ⑥ Plastic material: 9T- PA9T 94V-0; LP- LCP 94V-0
- ⑦ Plating Code; SW1-Matte Tin
GW01-Contact Area: Gold flash
Solder Area: Matte Tin
- ⑧ Color: N-Natural; B-Black; R-Red; L-Blue
- ⑨ Packing: W-Reel ,With Mylar C-Reel , With CAP R-Reel ,Without Mylar and Cap:

Poles	Dimensions (mm)					
	A	B	C	D	E	F
02	10.60	8.23	6.30	4.80	2.00	6.30
03	12.60	10.23	8.30	6.80	4.00	5.80
04	14.60	12.23	10.30	8.80	6.00	7.80
05	16.60	14.23	12.30	10.80	8.00	9.80
06	18.60	16.23	14.30	12.80	10.00	11.80
07	20.60	18.23	16.30	14.80	12.00	11.80
08	22.60	20.23	18.30	16.80	14.00	11.80
09	24.60	22.23	20.30	18.80	16.00	11.80
10	26.60	24.23	22.30	20.80	18.00	11.80
11	28.60	26.23	24.30	22.80	20.00	11.80
12	30.60	28.23	26.30	24.80	22.00	11.80
13	32.60	30.23	28.30	26.80	24.00	11.80
14	34.60	32.23	30.30	28.80	26.00	11.80
15	36.60	34.23	32.30	30.80	28.00	11.80
16	38.60	36.23	34.30	32.80	30.00	11.80

DATE	REV	ECN NO.	DESCRIPTION	MODIFY	APPROVAL
2023/12/16	A2	/	Added 16Pin	Joestar Zhou	Larry Yang
2023/11/30	A1	EN20231130003	Changed the dimensions of the layout positioning pad	Jason Zhou	Larry Yang

GENERAL TOLERANCE	
.X	±0.30
.XX	±0.20
.XXX	±0.10
X.' ±Z'	
PROJECT	

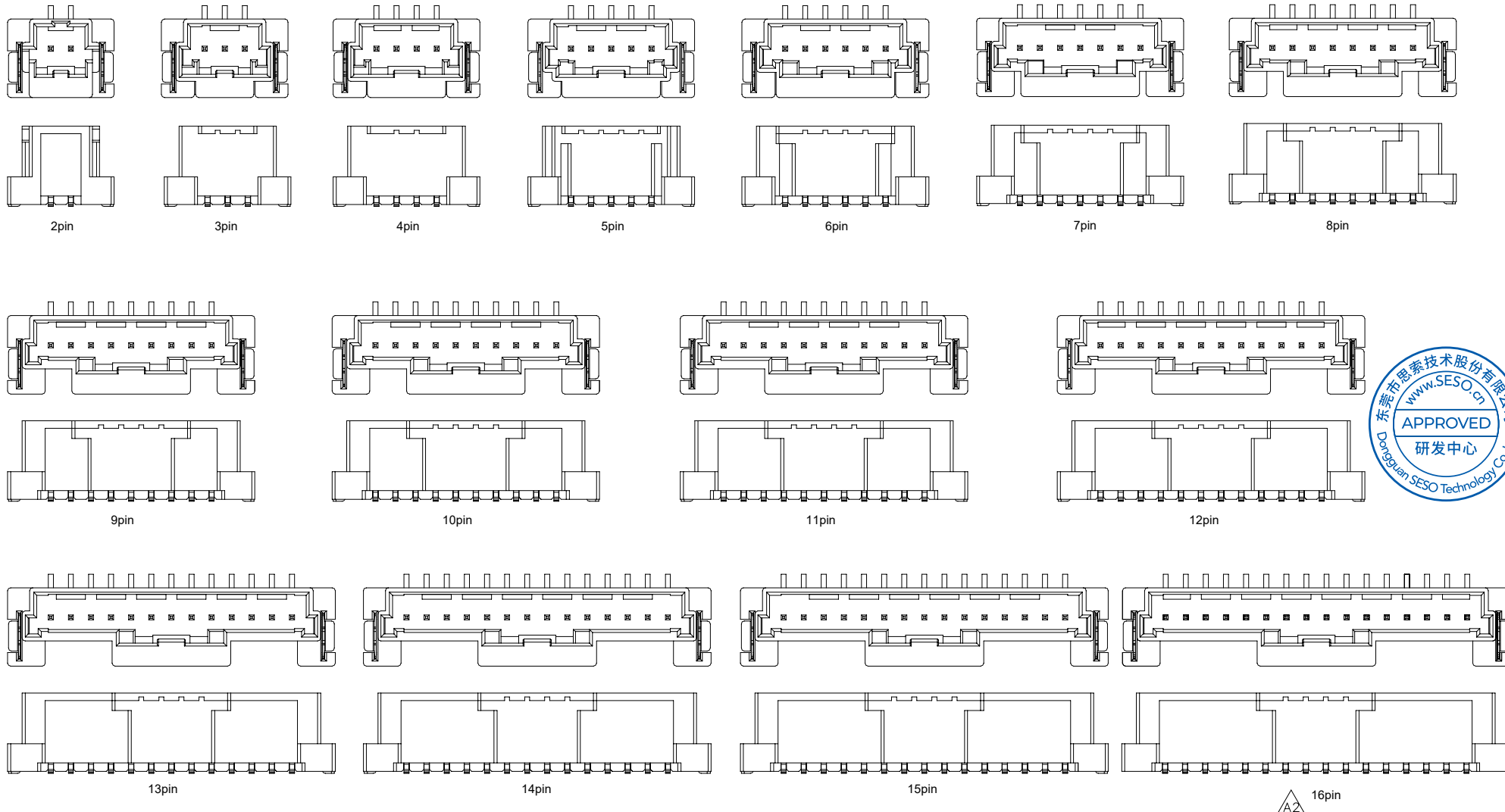
SMS 东莞市思索技术股份有限公司
Dongguan SESO Technology Co.,Ltd.

APPROVAL	CHECK	DRAWN	DATE
Jack Zhang	Larry Yang	Xue	2022/10/11

PART NO.				
2008WS-XX-XXXXXX				
TITLE				
Pitch 2.00 mm 180° SMT Wafer Connectors				
UNIT	SCALE	SHEET	REV	NUMBER
mm	1:1	1/2	A2	CD

RoHS

This products can apply to the SESO Doc NO. QA-3-04-005 of Environmental&Material Management Rules



					GENERAL TOLERANCE				PART NO.			
					.X ±0.30				2008WVS-XX-XXXXXX			
					.XX ±0.20				TITLE			
					.XXX±0.10				Pitch 2.00 mm 180° SMT Wafer Connectors			
					X.' ±2'				APPROVAL			
					PROJECT				CHECK			
					APPROVAL				DRAWN			
					APPROVAL				DATE			
					APPROVAL				2022/10/11			
					APPROVAL				UNIT			
					APPROVAL				SCALE			
					APPROVAL				SHEET			
					APPROVAL				REV			
					APPROVAL				NUMBER			
					APPROVAL				mm			
					APPROVAL				1:1			
					APPROVAL				2/2			
					APPROVAL				A2			
					APPROVAL				CD			

SMS 东莞市思索技术股份有限公司
Dongguan SESO Technology Co.,Ltd.

2023/12/16	A2	/	Added 16Pin	Joestar Zhou	Larry Yang
2023/11/30	A1	EN20231130003	Changed the dimensions of the layout positioning pad	Jason Zhou	Larry Yang
DATE	REV	ECN NO.	DESCRIPTION	MODIFY	APPROVAL

APPROVAL	CHECK	DRAWN	DATE
Jack Zhang	Larry Yang	Xue	2022/10/11